

Customer **Bama Companies** Item **12173 HARDEES BULK** Card **SB-B1756**

Colors **G90 Black** Style **FLAP** Size **15-3/16 X 9-11/16 X 7** Dies: **STOCK**

NOTE: USE 44 ECT BMC

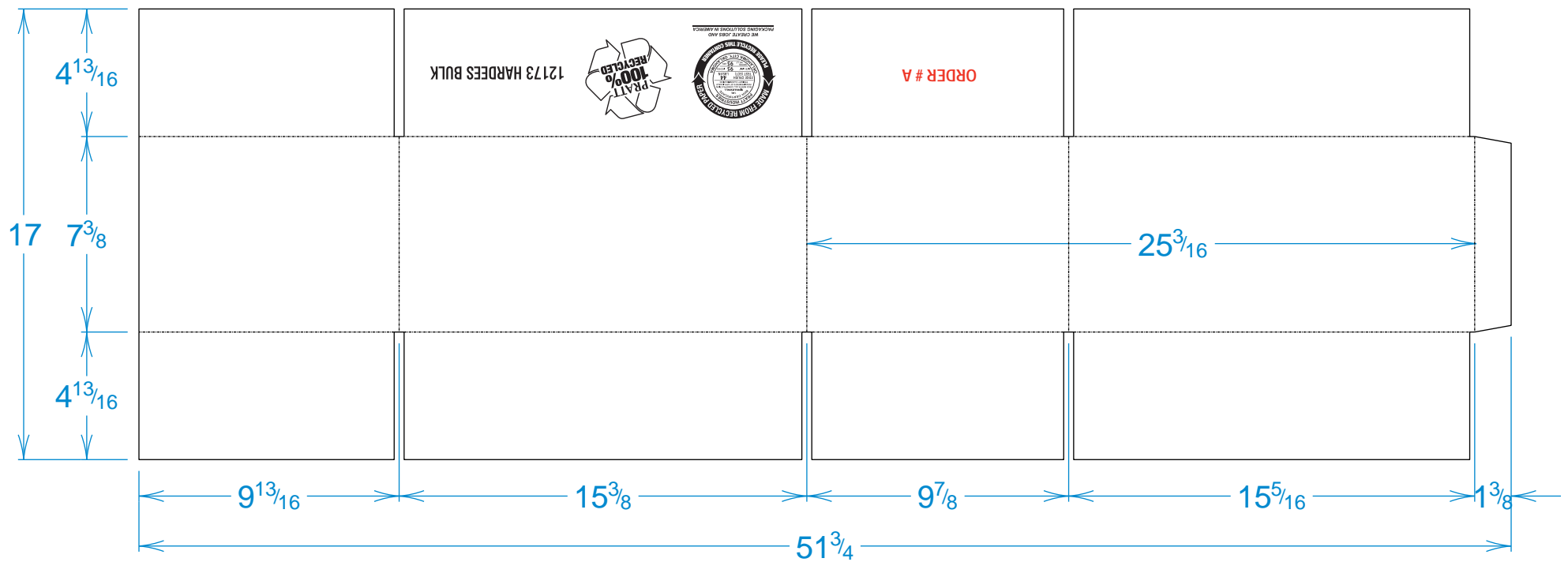
CTN

.250L POLYMER

File: 17889

P/O PRINT PLATES

Cyl: 37"



LEAD EDGE



WE CREATE JOBS AND PACKAGING SOLUTIONS IN AMERICA



6/27/16 - MA

12173 HARDEES BULK

THIS MINIATURE SHOULD NOT BE FOLLOWED FOR EXACT SIZE OR COLOR